

# Celebrate the Trent Valley Way Footpath



## A weekend of guided walks along the Trent Valley Way (TVW)



24<sup>th</sup> & 25<sup>th</sup>  
September 2022

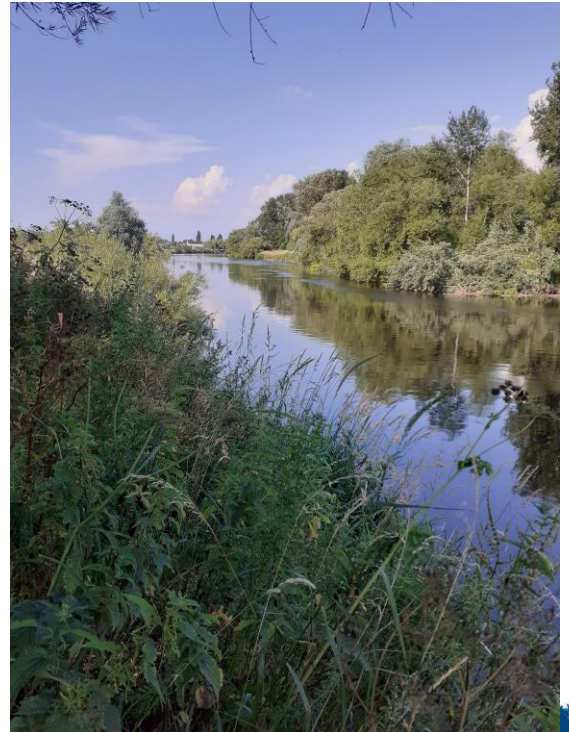
Walk the 51km stretch of the  
TVW on 1<sup>st</sup> October  
Please e-mail us to register interest

### Help us celebrate the launch of the Trent Valley Way

The Trent Rivers Trust is promoting a 51km long section of the route as a footpath from Rugeley to Shardlow, along with several circular walks.

*The TVW is a long-distance footpath that connects communities along the Trent Valley from the Staffordshire Moorlands to the Humber Estuary. Along the route it takes in a wide range of places of natural, historic and cultural interest.*

For more information contact:  
Alison Thornhill  
[alison@trentriverstrust.org](mailto:alison@trentriverstrust.org)  
Mobile: 07887 720214



[www.trentriverstrust.org](http://www.trentriverstrust.org)